

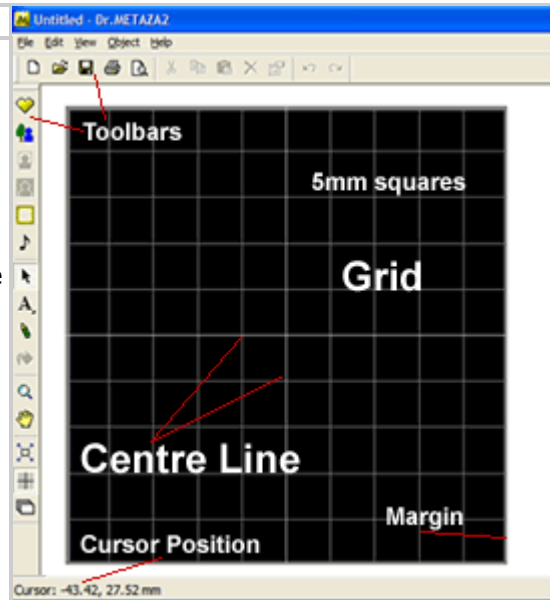
## Setting the Centre Origin Point

This is a guide to setting up your MPX-70 to obtain the best possible results.

\*Please read all of the included Operation Manuals before following our guides, and ensure you use the equipment in accordance with the manufacturer's requirements.

### STEP.1

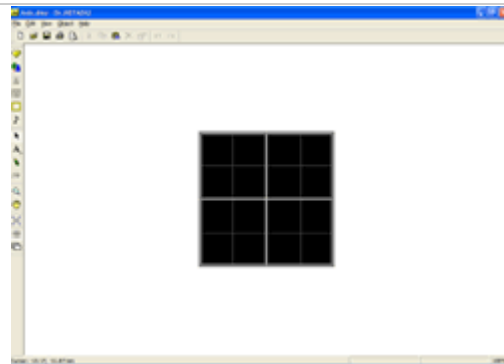
Start up the DrMetaza2 package and you should see this screen.



### STEP.2

Click on '**File**', '**Open**'...

Then open the 'Axis.dmz' file located at:



**C:\Program Files\Dr.METAZA2\Samples\Axis.dmz**

You will now see a 20mm x 20mm square with a bold cross through the centre. This bold cross will be engraved onto the brass plate to check against the grid on the engraving bed of the MPX-70.

### *Brass Plates*

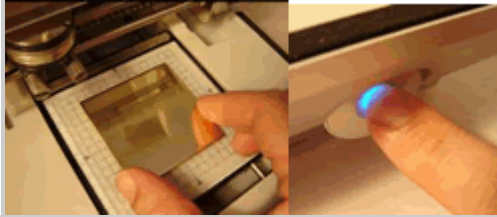
At this point you will need to find one of the *brass plates* included in the MPX-70 box.

Please note that these are not available as a replacement item, so do not use them for purposes other than centre origin or calibration.

### STEP.3

Inserting the Material

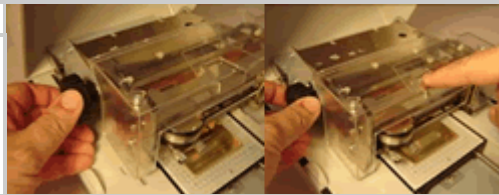
Line the brass plate up in the EXACT centre of the engraving bed.



Turn the machine on. Press the button again to initialise/centralise the engraving bed.

### STEP.4

Ensure that the engraving head is free to move up/down.



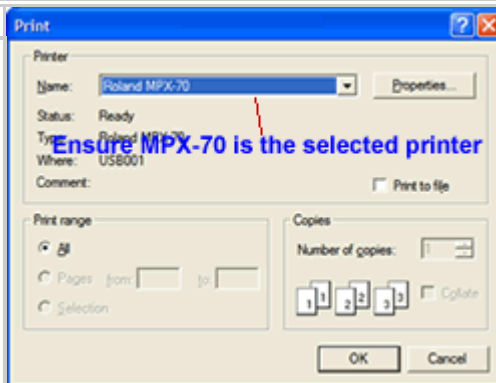
Press **GENTLY** down on the metal part of the head where indicated, then when the guide bar touches the surface, lock in place gently with the knob.

**\*\*!!Take care when pressing down 'gently'. DON'T press too hard or you will risk scratching the metal with the pins!!**

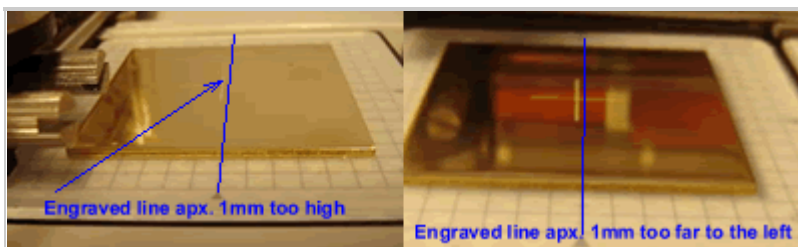
### STEP.5

Once everything is set up press 'Print'.

Once the brass plate is engraved the engraving bed will move to the front and stop.



Do **NOT** move the brass plate from where it is. You will need to see how it lines up.



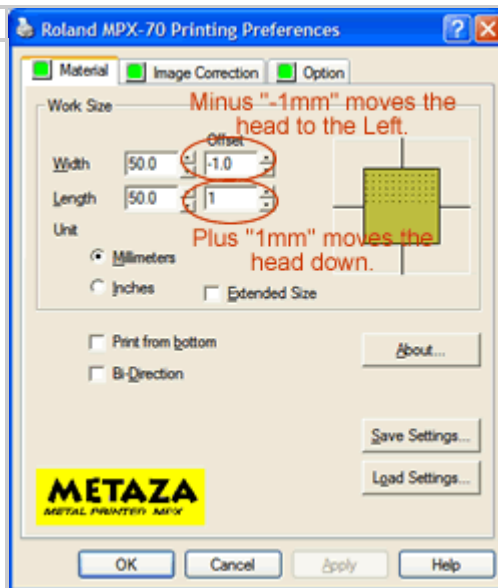
### STEP.6

You may see that the engraved lines don't match up to the grid lines on the engraving bed.

You can compensate for this in 'print settings'.

## STEP.7

Click on 'Start', 'Printers and Faxes', then right click on the 'Roland MPX-70' icon and select 'Printing Preference...'.  
You can now adjust the material settings as desired.



## Compensating/Offset Settings

### Width

(minus) -X.Xmm = Moves engraving head to LEFT

(plus) X.Xmm = Moves engraving head to RIGHT

### Length

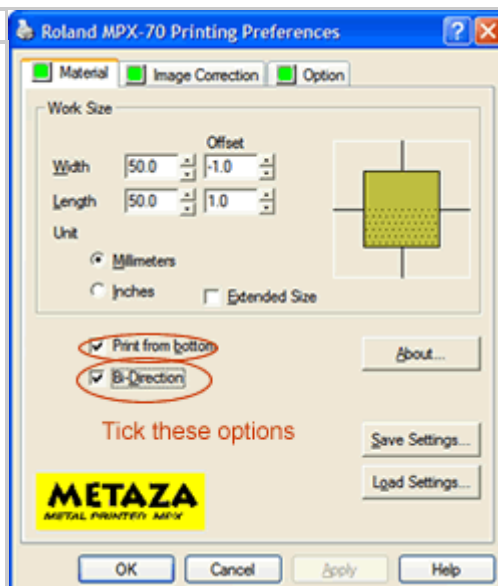
(plus) X.Xmm = Moves engraving head DOWN

(minus) -X.Xmm = Moves engraving head UP

## STEP.8

On the same Material settings...

Tick both the options shown on the image. 'Print from bottom' enables you to see the engraving as it is been done, and 'Bi-Direction' speeds up the engraving process by printing in both directions of the head's left and right movements.



It is also good practice to increase the 'work size' from 50mm to 79mm for both width and length.

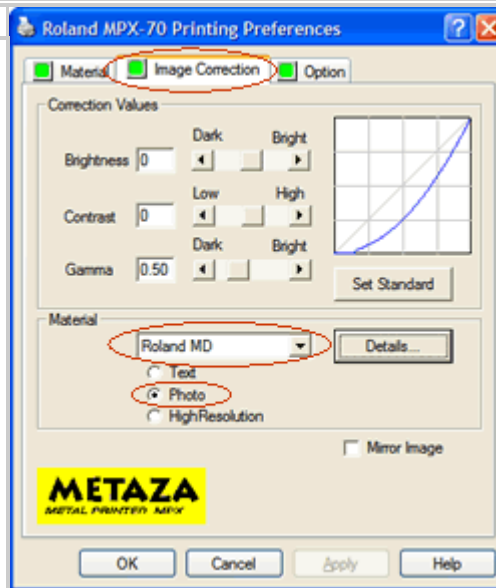


**STEP.9**

Click on the 'Image Correction' tab along the top.

Select 'Roland MD' from the drop down list box for best results on most metals.

Select 'Photo' for the resolution for the best all-around setting.



Your preferences for setting the resolution to either Text, Photo or High Resolution will be gained from experience as some images or logos will require the High Res. setting.

**Text = 265dpi :: Photo = 353dpi :: High Resolution = 529dpi**

**The MPX-80 can engrave up to 1058dpi using Vector Line methods.**