

## Head Calibration

Head calibration should be performed before using the MPX-70 for the first time.

If at any time you find you are getting poor/faint engraving results it is wise to perform this head calibration again.

\*Please read all of the included Operation Manuals before following our guides, and ensure you use the equipment in accordance with the manufacturer's requirements.

### STEP.1

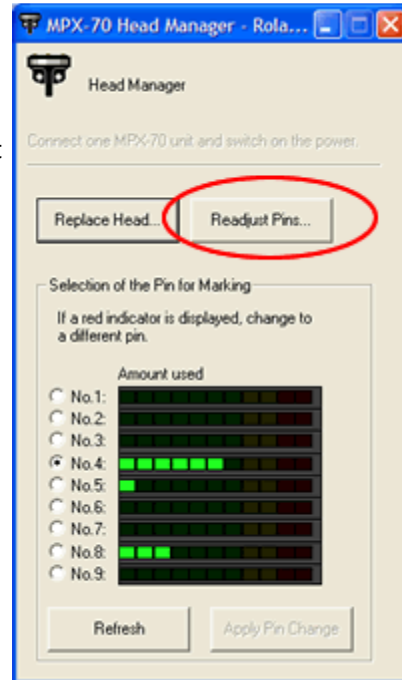
- Start up the DrMetaza2 package, connect and turn on the power of the MPX-70.

- Within Windows, click on '**Start**', '**Programs**', '**Roland Dr.Metaza2**' then choose '**Head Manager**'.

You will now see the Head Manager panel shown here.

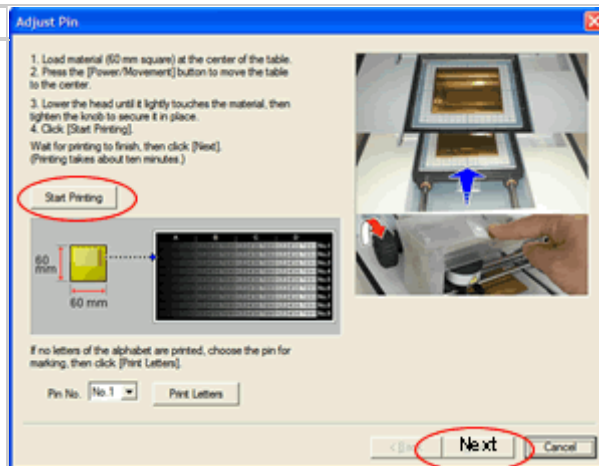
The 'Head Manager' program allows us to monitor the use of each pin, change-over pins, replace the head and calibrate the head.

Click on '**Readjust Pins**'.



### STEP.2

Using the same piece of brass test material as you did for the 'axis check'

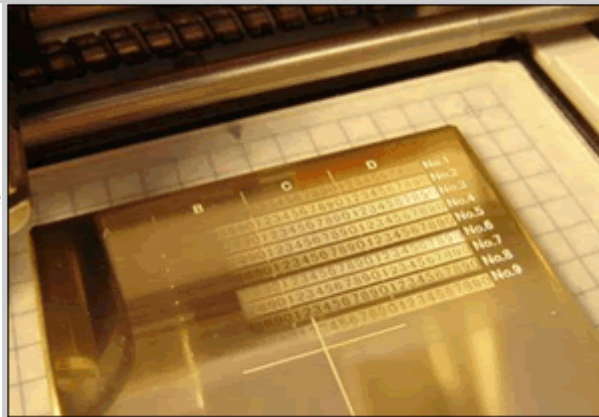


Click '**Start Printing**'.

A scale will now be printed onto the brass material for each of the pins. This will take about 10 minutes and when complete click '**Next**'.

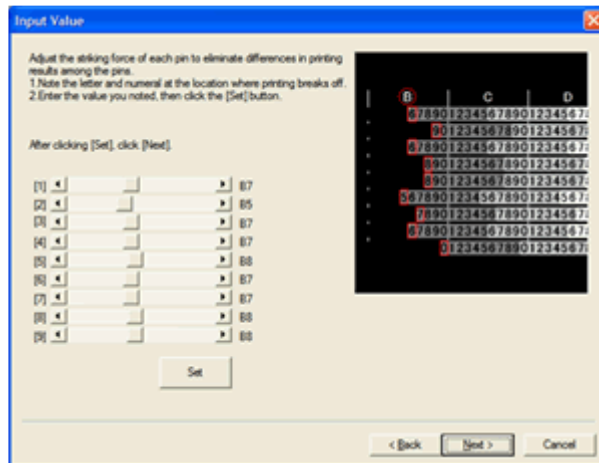
### STEP.3

You now need to look carefully for the first visible number on the left side of the scale.



#### STEP.4

Set the sliding buttons to the value of whichever first number you can see on the engraving.



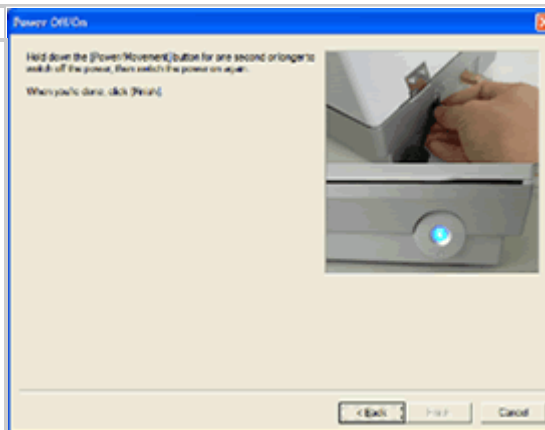
Do this for each pin and then click 'Set'.

Click 'Next' to proceed to the final step.

#### STEP.5

To save these changes in the machine **press and hold the power button** until the machine turns off.

Press the power button again to switch ON the machine.



Click on 'Finish'.

#### Remember:

The calibration settings are stored in the firmware of the MPX-70 and not the PC.