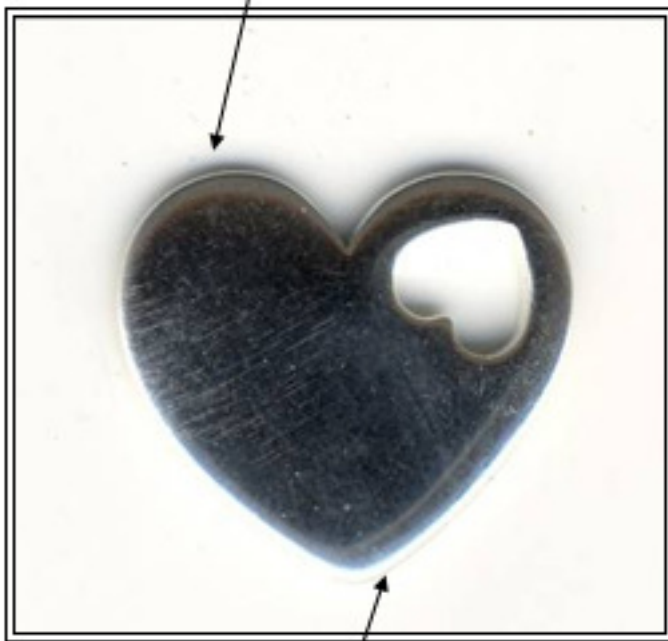


Creating Metaza .dmz/.mzs 'Templates'

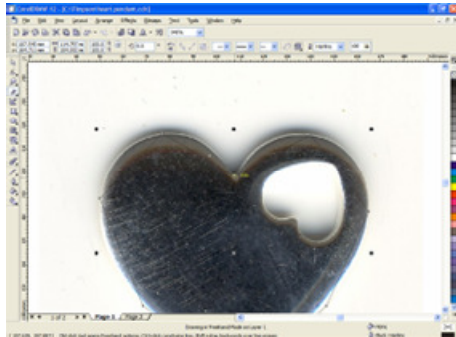
- If you have a regular item from another supplier, you might wish to create your own template.
- If you have a brochure showing a black and white image of the item, this is very simple within Dr. Metaza2. However, most items have to be reproduced from scratch.
- You may need another program such as CorelDRAW! for this.
- Photograph or scan the object.
- Metal objects reflect light back. Take care when identifying the edge of an item.

Watch out for shadows

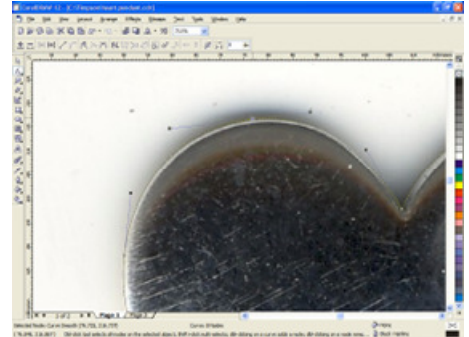


Material edge is here

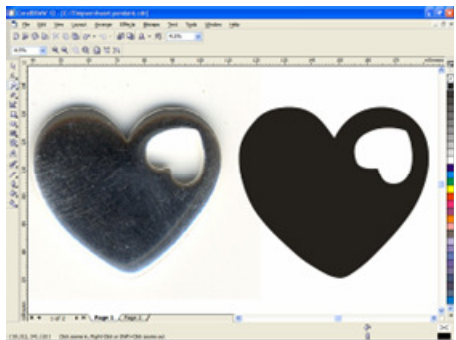
Making Templates



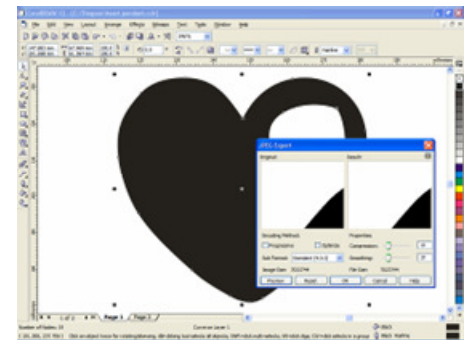
Use the vector drawing tool to position nodes around the edge of the item.



Edit the node and lines to match the shape of the item.



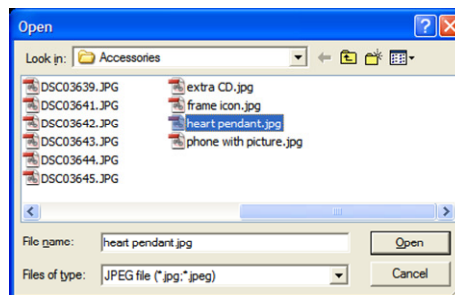
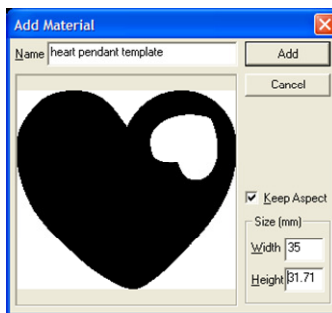
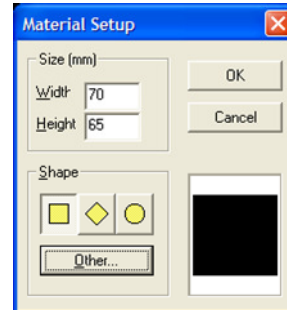
Colour the resulting outline black (combine multiple objects first).



Select the finished image and export as either .bmp or .jpg

Making Templates

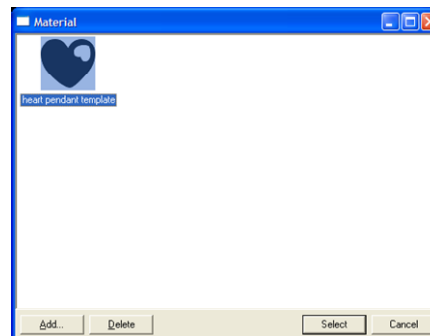
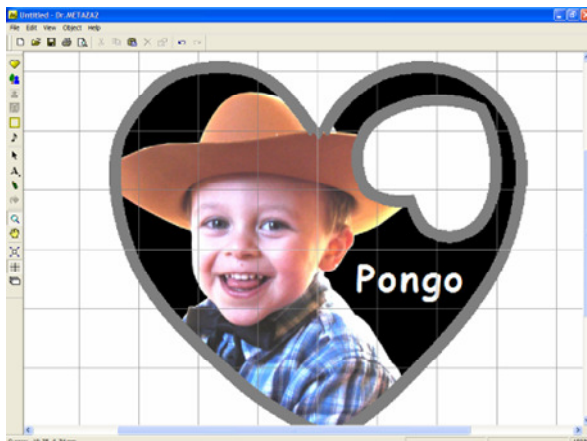
- At Material Setup, select Other.
- Then select Add, followed by File.
- Select the required file name and click on Open.
- Set the correct size and Add.



69

Making Templates

- Highlight your new template and click on Select.



- The preset margins will adapt to the new shape.

70