

MPX-80: Importing .dmz (MPX-70) files into a METAZAStudio .mzs (MPX-80) file

Problem = Need to use your old .dmz templates in METAZAStudio.

Solution = Convert your .dmz files into .mzs files.

*Please note that you MUST check that the *new* position of the *new* template engraves in the same place as the old one, as this may require slight adjustment of the material or template.

*Please read all of the included Operation Manuals before following our guides, and ensure you use the equipment in accordance with the manufacturer's requirements.

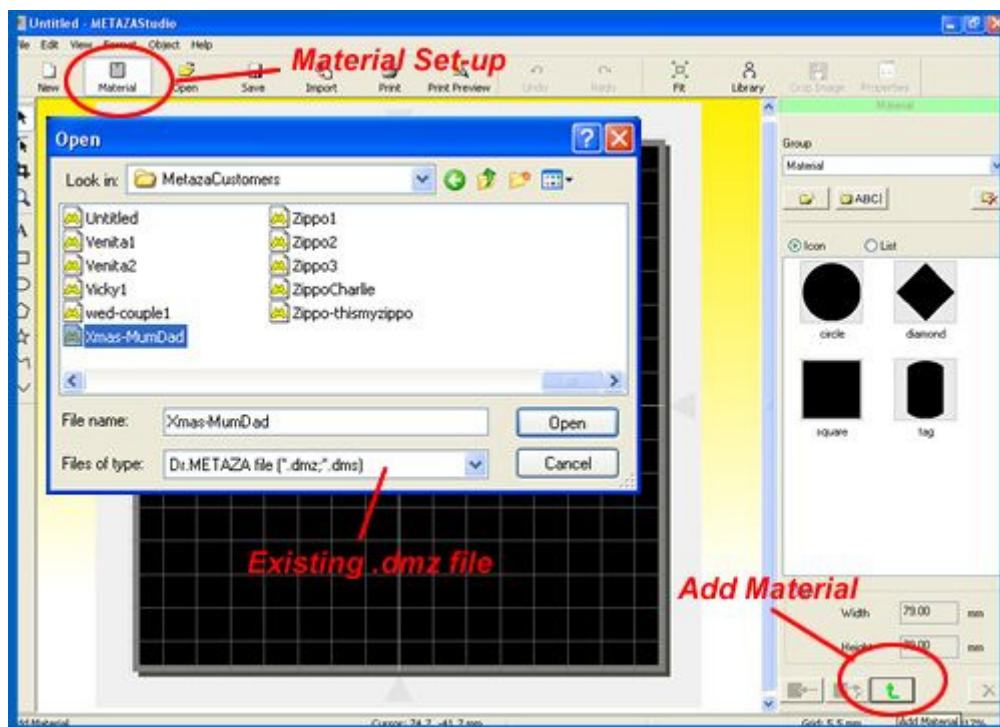
Import your existing .dmz file

Open METAZAStudio, the software for operating your MPX-80, and ensure you have the 'Material set-up' window open on the right side of the window.

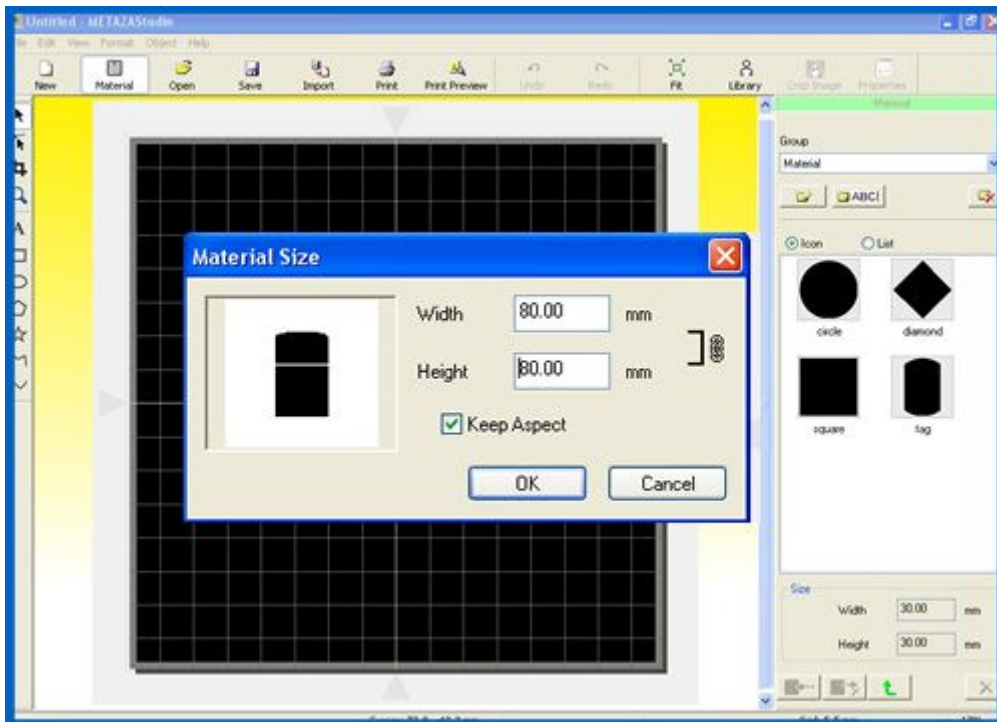
Click on the 'Add Material' button, then choose 'File'.

Once you have done this you will be able to choose one of your old .dmz files.

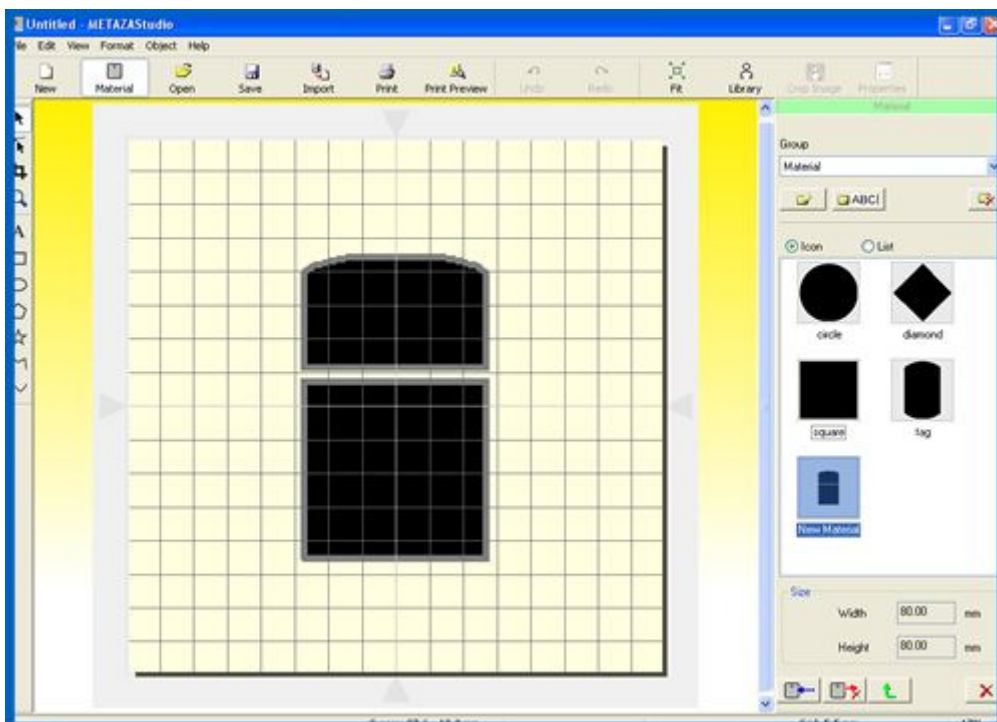
Select desired file and click Open.



When prompted to enter the material size, choose 80mm x 80mm as this is the overall size of the print area/canvas.
Tick 'Keep Aspect'.



Import complete and the old .dmz is now a template.
If you wish, you can now save this as a .mzs once you are satisfied with it for future use.



*Please note that you **MUST** check that the *new* position of the *new* template engraves in the same place as the old one, as this may require slight adjustment of the material or template.